



POSIBOT

EMPTY BOTTLES/CONTAINERS AND OBJECTS UNSCRAMBLER



POSIBOT is a unique unscrambler designed to handle **any type of bottle/container and objects of different geometrical shapes.**

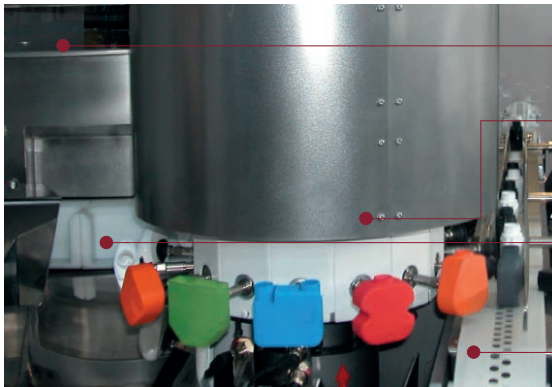
It features a system with suction pads that **can turn** the bottles/containers or objects being positioned up to **360°** and then automatically places them on the exit conveyor with great unscrambled without applying any mechanical pressure.

The **changeover process** is carried out manually in under 5 minutes by changing the format selecting pieces **without tools or adjustments, by a non-skilled operator.**

This model has been specially designed to operate automatically and does not require a dedicated operator.



Description of the unit



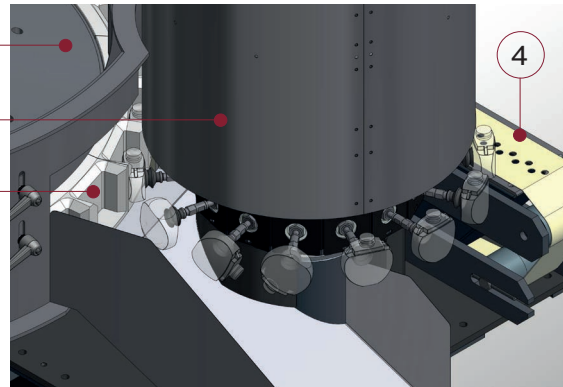
Interior of the POSIBOT unscrambler

1

3

2

4



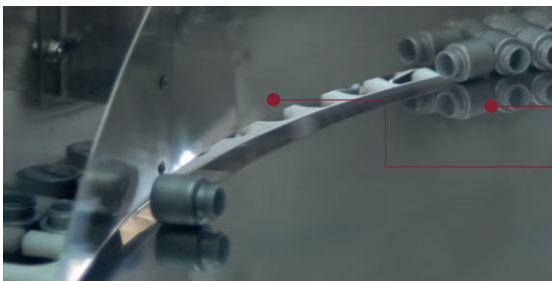
Interior of the POSIBOT unscrambler (3D simulation)

Bottles, containers or objects enter the unscrambler through an elevator, they are distributed on the top rotary disc (1) and then placed into the cavities of the selecting pieces (2). This is achieved without any complex mechanical design: **simply with air and gravity.**

At a certain point of the rotation process, the rotating device that uses suction pads (3) takes the bottle/container from the selecting piece and **rotates it up to 360°** if necessary, gently discharging it on the exit conveyor (4), without applying any type of pressure.

The format is composed of a selecting piece which has different cavities customised to the type of bottle, container or object being handled. **The changeover process is performed manually**; and involves changing the selecting pieces and changing the height of the rotating disc. **This is achieved in a matter of minutes.**

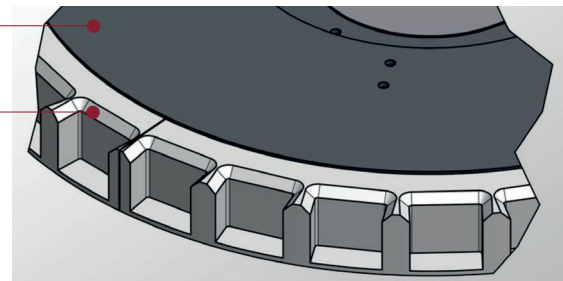
The **rotating device does not require** any type of **adjustment** to perform the changeover process.



Interior of the POSIBOT unscrambler

1

2



Selecting piece with multiple cavities (3D simulation)

Advantages of using POSIMAT's products

Simplicity of design and operation: the rotary unscrambler features a single moving core. The system does not use hooks, springs, straps, elevators, ramps or chains that must be replaced in the long-term. **It has no parts subject to wear.**

It does not require the intervention of specialised operators.

Reliable, with very simple and very little maintenance requirements.

Cabin with doors and windows, which provide a full view of what is happening inside the unit at all times and also provides access to the inside after the unit is stopped for cleaning and maintenance.